



*Research Center Administrators Society 2025 Conference*

September 21-24, 2025

*Hosted by*





# The RCAS Fall Meeting 2025: Go New Jersey!!

## Schedule:

- Sept. 21 Board Meeting
- Sept. 22 Presentations and Marine Research Stations Bus Tour
- Sept. 23 South Jersey Bus Tour
- Sept. 24 Central Jersey Bus Tour
- Farm-to-table dinner







*Seaview*

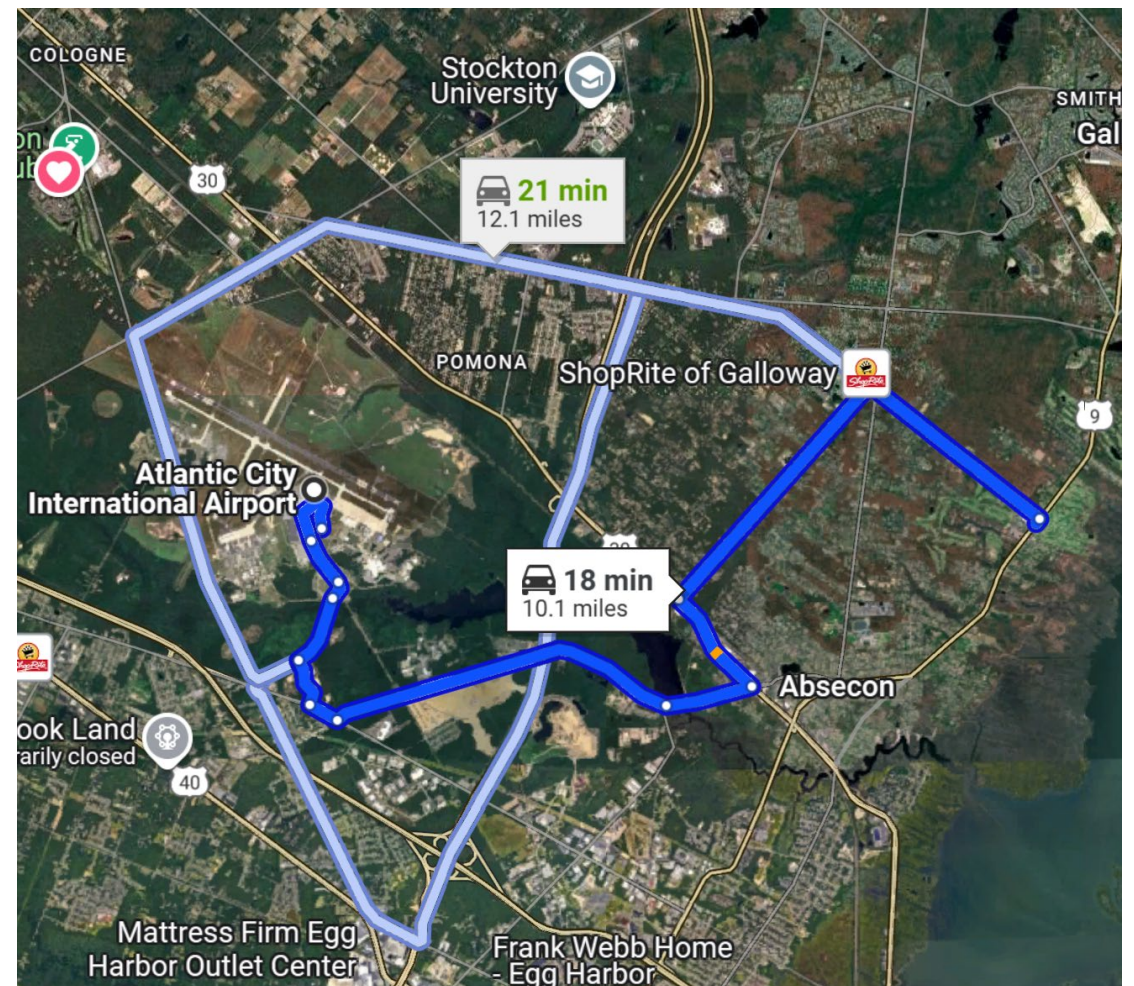
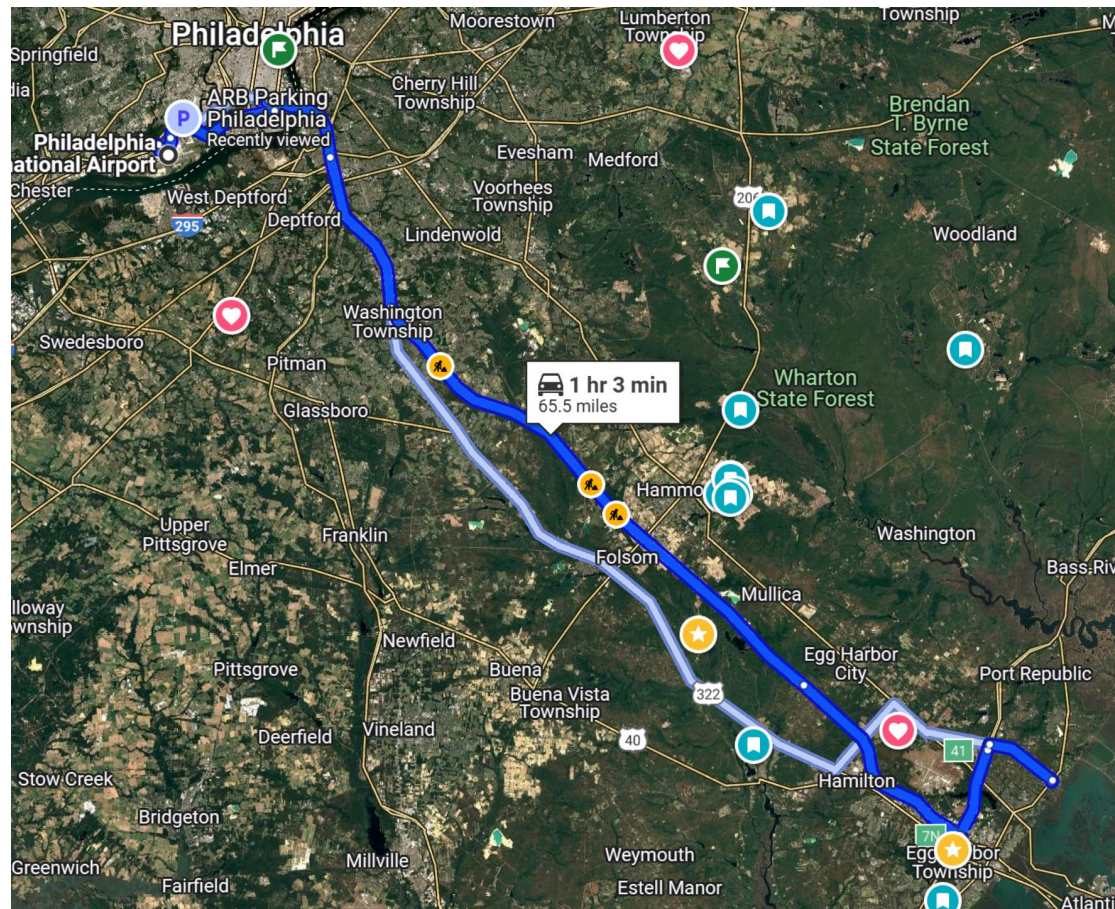
A DOLCE HOTEL



RUTGERS UNIVERSITY  
New Jersey Agricultural  
Experiment Station

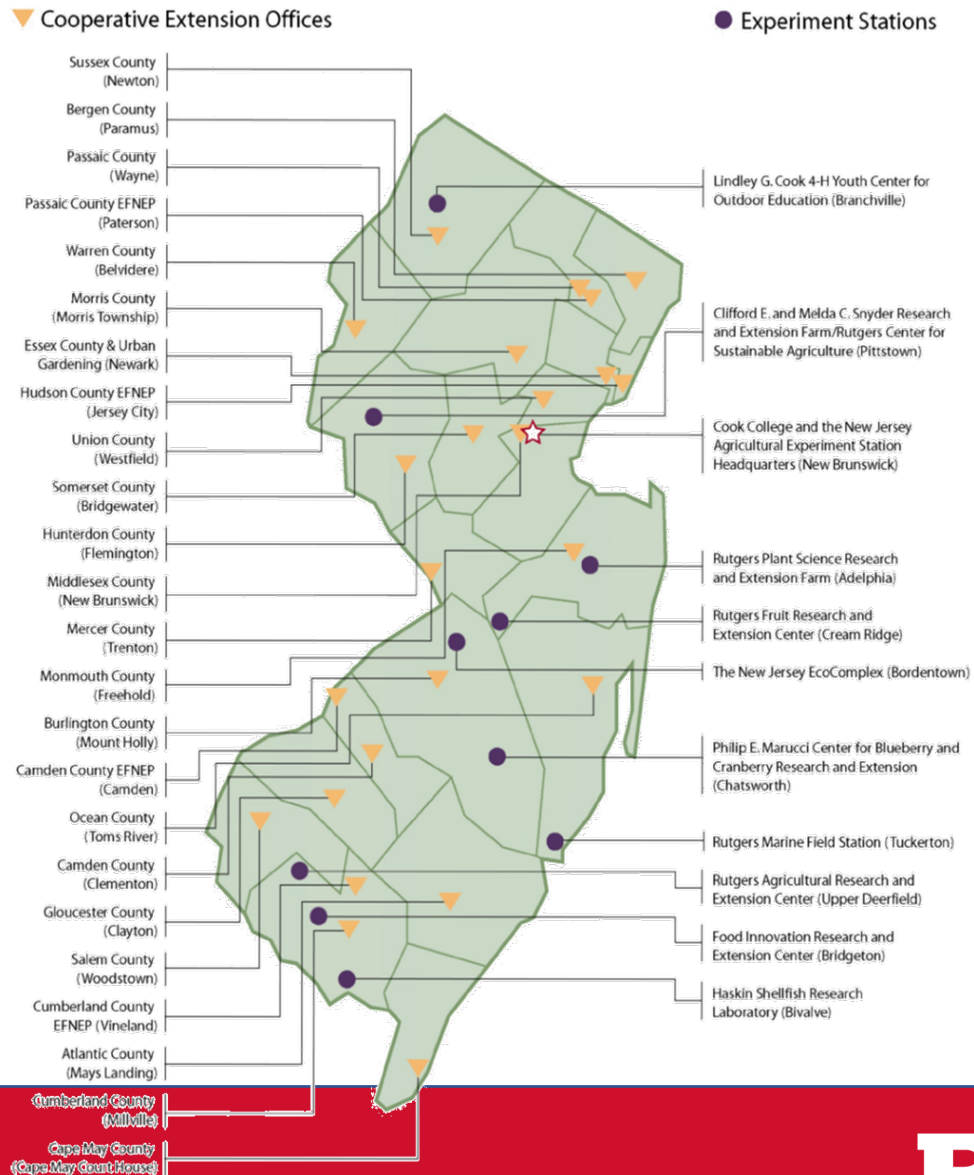


# Getting There!!





# What is NJAES?



- **3<sup>rd</sup> oldest** state experiment station founded in U.S. in 1880
- **15 Research** stations throughout the state
- **Extension** offices and programs in all 21 New Jersey counties
- Funded by state legislature, Board of County Commissioners, and USDA
- **Largest research unit** at the university
- **Strong economic engine** for New Jersey



# Outstanding Program!

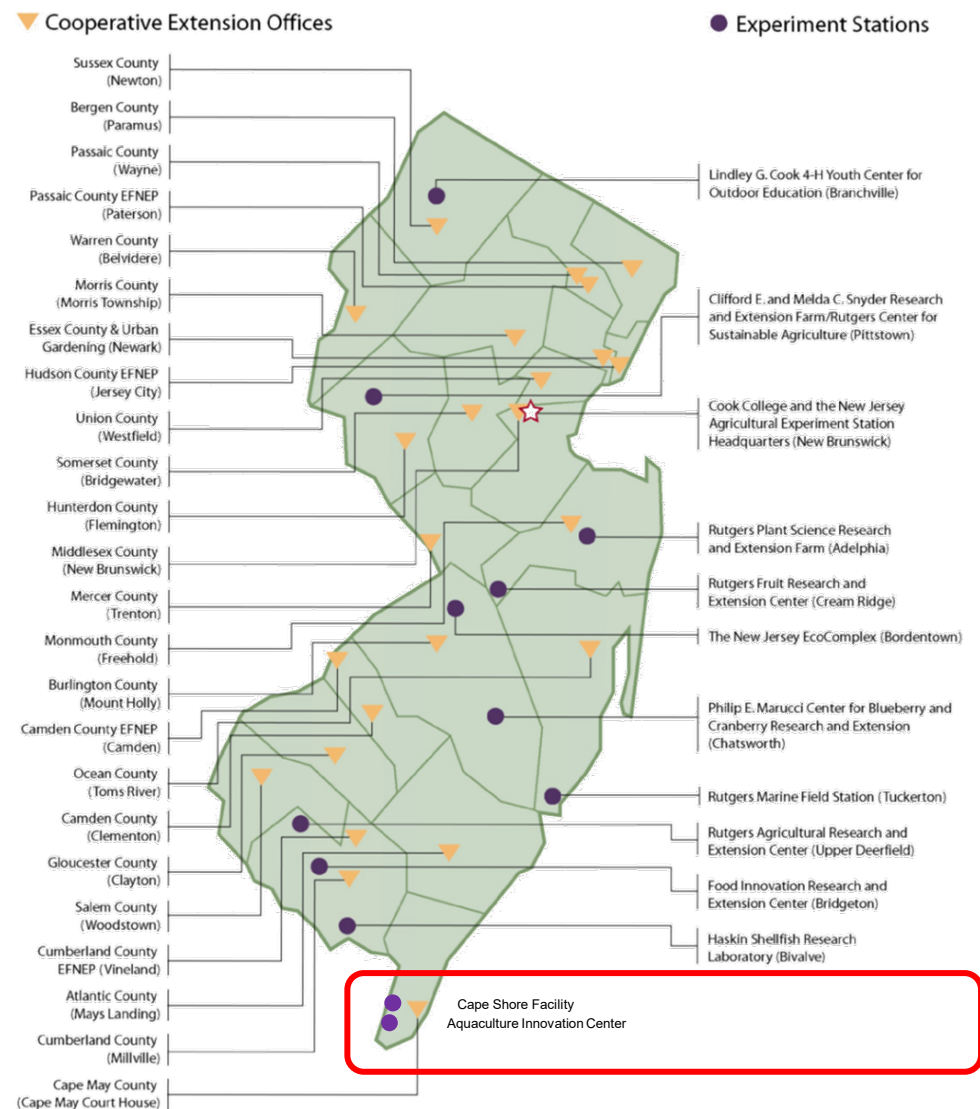
## Tour Unique Research Facilities

- World Class Turf Research
- Oyster Breeding
- Aquaculture Innovation Center
- Dogwood and Hazelnut Breeding
- Cranberry Bog Tour and Breeding Program
- Basil Breeding
- Agrivoltaics Installations
- Food Innovation Center
- Agricultural Technology Demonstrations
- Beginning Farmer Program





# NJAES Research Farms and Outlying Stations



## Marine Research Stations Tour

- ✓ Cape Shore – Cape May Courthouse
- ✓ Aquaculture Innovation Center – Cape May



RUTGERS UNIVERSITY  
New Jersey Agricultural  
Experiment Station



# Cape Shore Facility

## *Cape May Courthouse, Cape May County*

- Oyster breeding and hatchery facility on the Delaware Bay
- Includes over 7 acres of bay rights for research

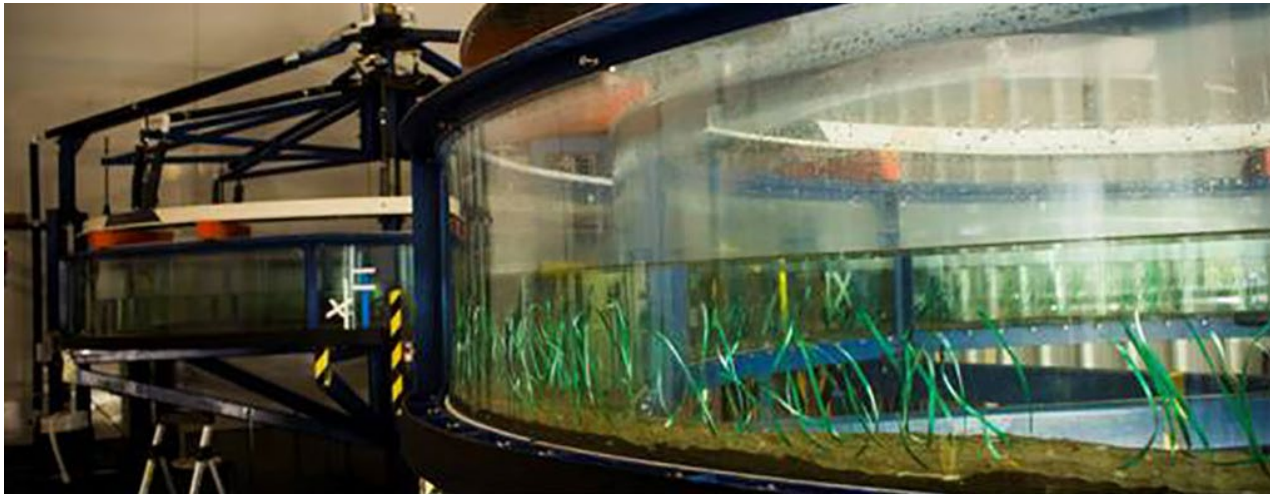




# Rutgers Aquaculture Innovation Center

*Cape May, Cape May County*

- Oyster and finfish research and development
- Aquaculture industry incubator
- Living shoreline demonstration to correct bank erosion

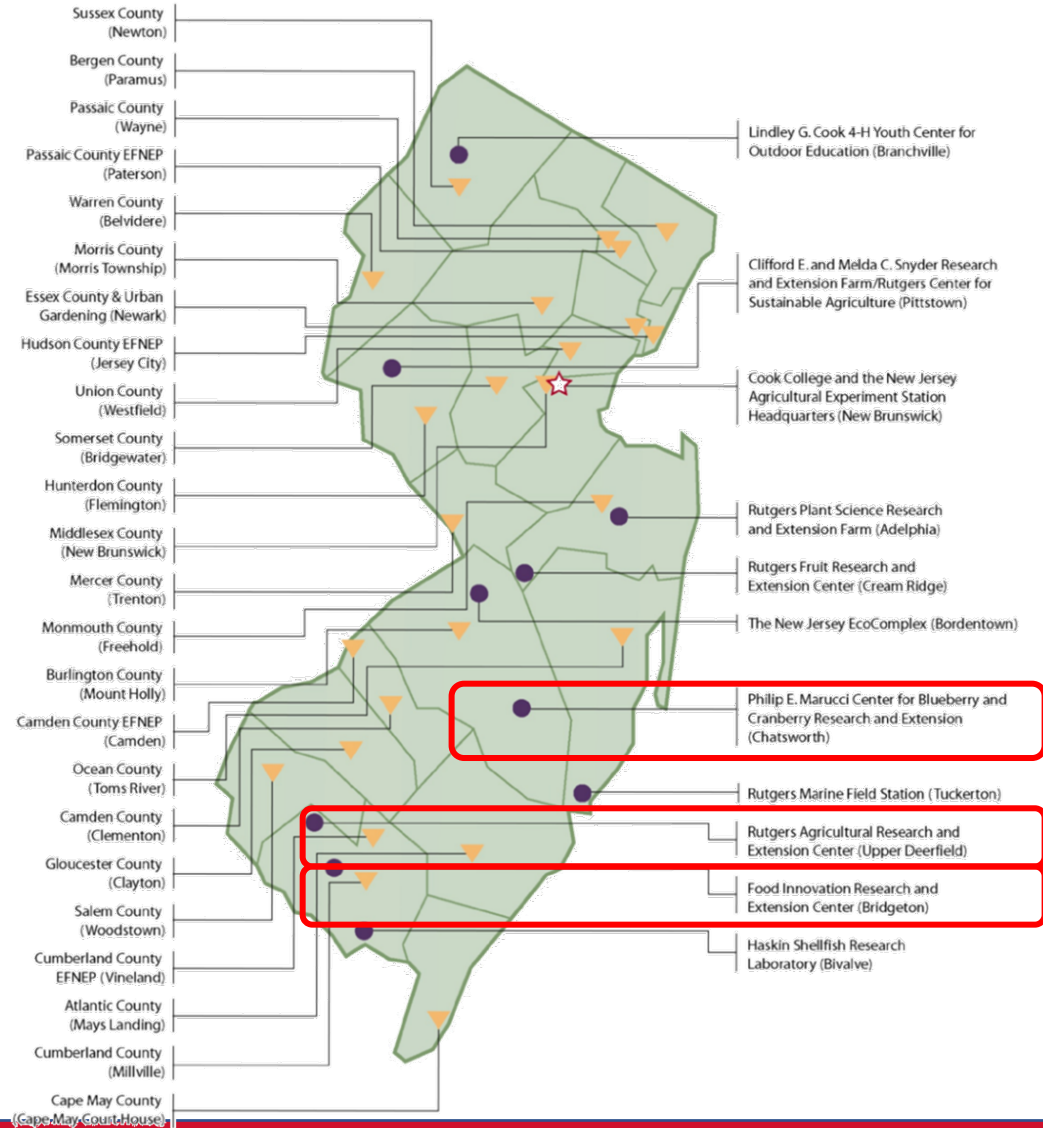




# NJAES Research Farms and Outlying Stations

▼ Cooperative Extension Offices

● Experiment Stations



## South Jersey Tour

- ✓ Rutgers Agricultural Research and Extension Center – Upper Deerfield
- ✓ Food Innovation Center – Bridgeton
- ✓ Philip E. Marucci Center for Blueberry and Cranberry Research and Extension – Chatsworth

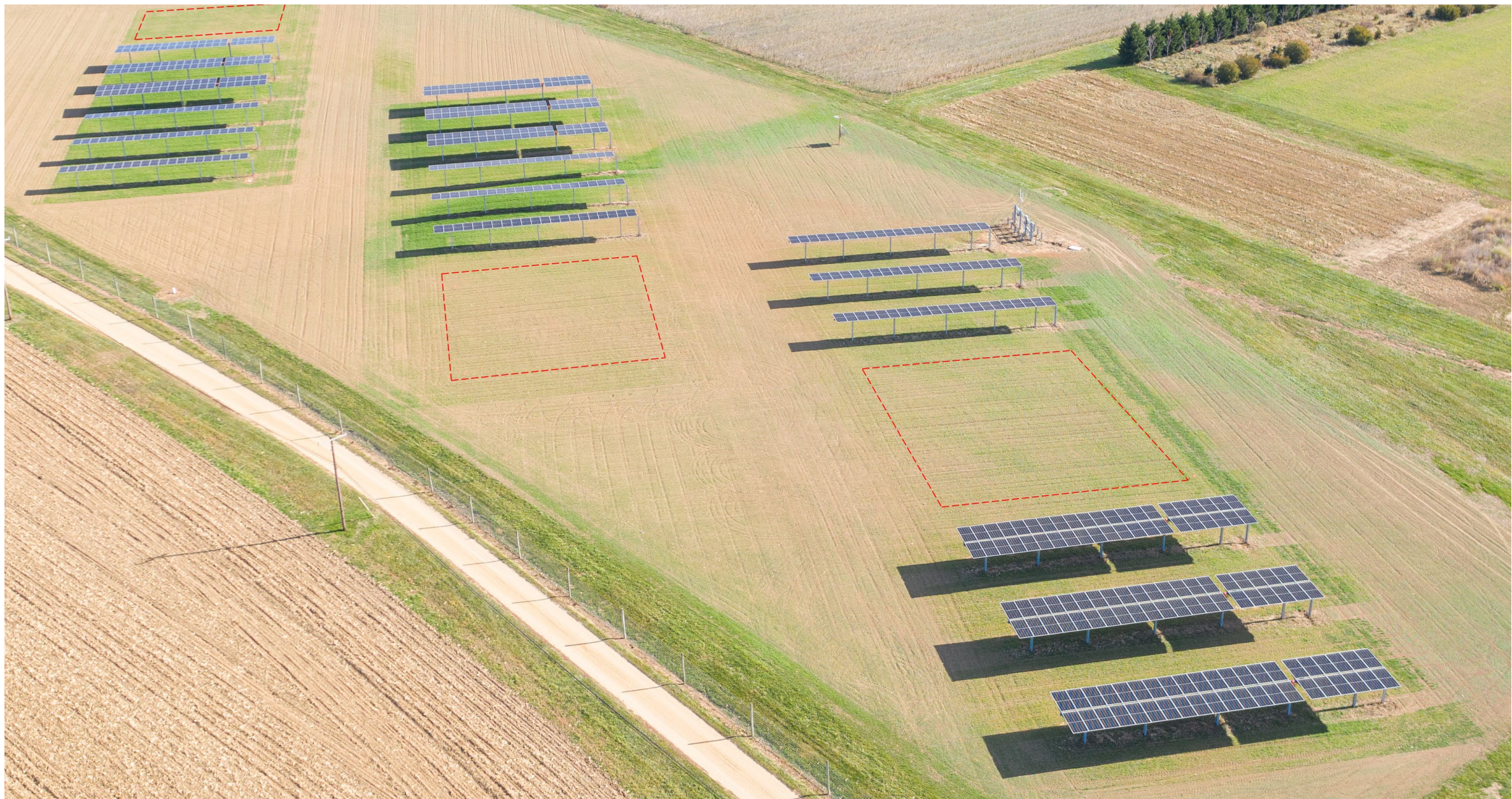




# **Rutgers Agricultural Research and Extension Center at Upper Deerfield**

**Farm Director Dan Ward**







# Food Innovation Center

*Bridgeton, Cumberland County*

- Internationally-recognized food business incubator
- 23,000 sf. USDA/ FDA inspected Facility
- Design, development, commercialization, and manufacture of innovative food products
- Assisted over 3,000 businesses to date
- Value-added ag products







Philip E. Marucci  
Blueberry and Cranberry  
Research and Extension Center



100 YEARS  
1918-2018





An aerial photograph of a cranberry bog during harvest. A large, irregularly shaped area of the bog is covered with bright red cranberries, enclosed by a yellow floating boom. Three workers are visible within this area: one in a blue jacket using a long-handled tool, one in a black jacket wading, and one in a green jacket near a mechanical harrow. The harrow is a metal frame with rotating tines, being pulled by a system of cables and pulleys. The surrounding water is dark and calm, reflecting the overcast sky. In the background, a dirt road runs alongside the bog, and another section of the bog is visible in the distance.

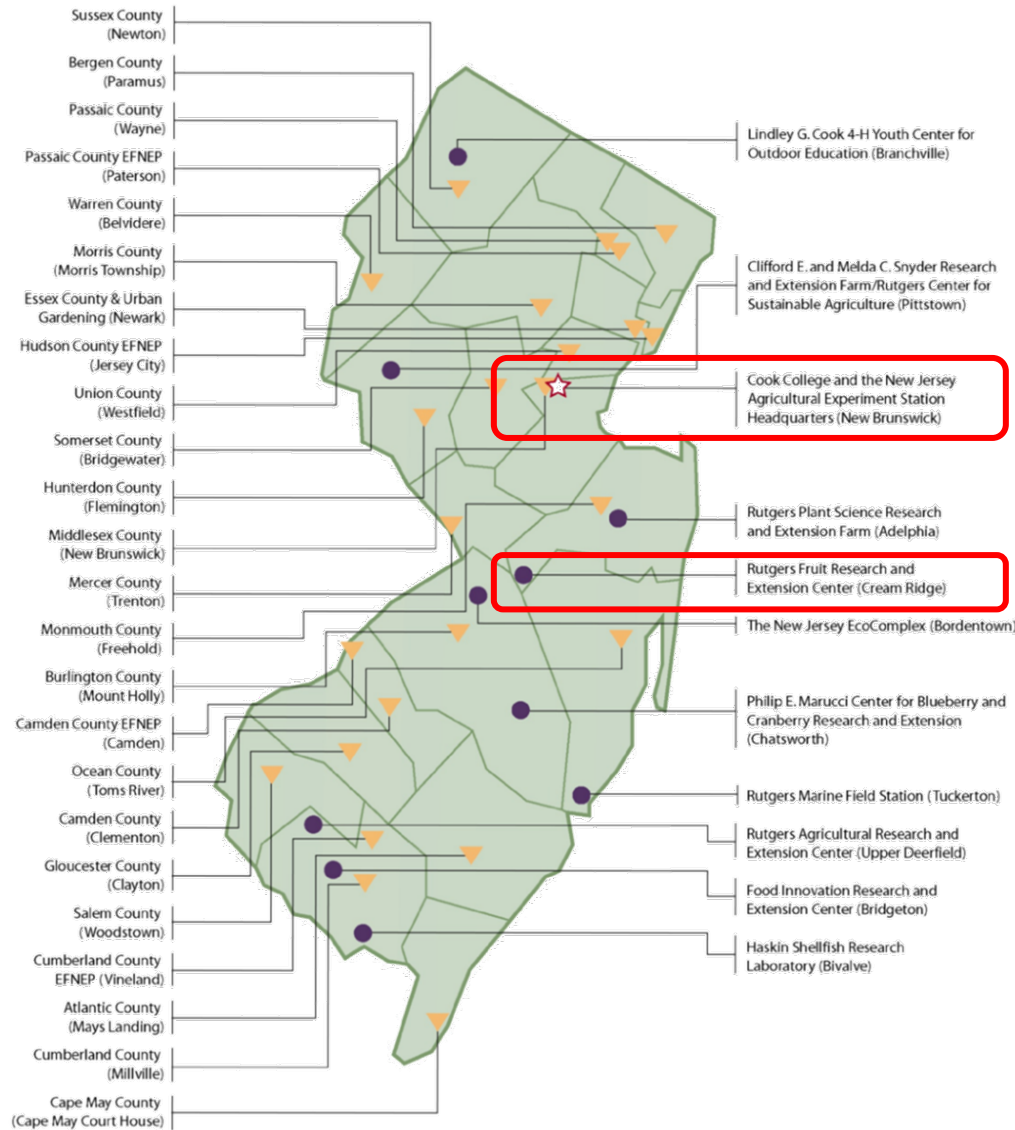
## Cranberry Bog Tour



# NJAES Research Farms and Outlying Stations

▼ Cooperative Extension Offices

● Experiment Stations



## Central Jersey Tour

- ✓ Hort Farms I, II & III – New Brunswick
- ✓ Rutgers Specialty Crop Research and Extension Center – Cream Ridge



RUTGERS UNIVERSITY  
New Jersey Agricultural  
Experiment Station



# Hort Farm I, II and III

*New Brunswick, Middlesex County*

- Hazelnut breeding center – primary use
- Other crops as well - Dogwoods, Basil breeding, Biocontrols
- Resource for growers interested in hazelnut production from New Jersey and the Northeast
- Turf research center
- Metasequoia Breeding Program



Hazelnut Breeder  
Tom Molnar





# Hort Farm II – Turf

*New Brunswick, Middlesex County*

- Established in 1967
- World leaders in the breeding and management of cool season turfgrass
- Training for graduate and undergraduate students
- Breeding for disease resistance and developing turf management programs to reduce pesticide use





# Guest Tours

## Historic Cape May

Known as the “Queen of Seaside Resorts” for its quaint cottages, pristine beaches, great restaurants, and unique shops.

Cape May is the oldest seaside resort in the country.



## Atlantic City

Famous for its casinos, boardwalk, restaurants, entertainment and salt water taffy.

Outstanding shopping:

- ✓ Tanger Outlets
- ✓ The Quarter at the Tropicana







**RUTGERS UNIVERSITY**  
**New Jersey Agricultural  
Experiment Station**



**THE FRESHEST FOR 40 YEARS**

[Find Jersey Fresh](#)

